

Only a MAAX Spas dealer can bring you the feeling of owning the most technically advanced hot tub in the world.
visit www.maaxspas.com

MAAX Spas Industries Corp.
25605 S. Arizona Avenue,
Chandler, AZ 8524

MAAX COLLECTION

2010 SPAS



The time has come to transform your backyard into a relaxing spa environment. Owning a personal spa allows you the convenience of using it around your busy schedule, never leaving the comfort of your home. There are many MAAX Spas models available to personalize your spa experience and provide seamless integration into any backyard design.

Your MAAX Spas hot tub has been engineered for Hydrotherapy and relaxation. Performance Seating and Zone Therapy jet systems are just a few of the exclusive features you will discover as you enjoy the benefits of your new spa.

Whether taking time for you or connecting with loved ones, MAAX Spas is the hot tub of choice.



You'll love the way your MAAX Spas hot tub looks in your backyard. Romance and renewal are now just a few steps away. The adventure begins as your own personal spa becomes a reality.



351

The MAAX Collection 351 offers seating for three that includes a performance lounge and thirty adjustable jets. Designed for comfort and elegance, it's the perfect model for patios, decks and smaller backyards.



MODEL 351

Dimensions	64" X 81"
Depth	31"
Seating Capacity	3
Average Water Capacity	200
Weight (empty/full)	600/2200
Lounge.....	Yes
Bucket Seating.....	Yes
Drink Holders	3
5" Underwater Light.....	Yes

STANDARD FEATURES

Thermo-Lock™ V Insulation	Yes
Programmable Filter Cycles	Yes
Steel Sub-Structure	Yes
DuraMAAX™ Cabinetry	Yes

DELUXE THERAPY PACKAGE

Pump1.....	2.5Hp/4.8bHp, 230V, 2Sp
Electrical Requirements (4-Wire).....	240/30A/40A
Head Cushions	3
Digital Color Optic Lighting (interior only)	Yes
Jet Total	30

OPTIONAL FEATURES FOR DELUXE

CleanZone™ System.....	Yes
Stainless Steel Accent Package	Yes



461

The MAAX Collection 461 is the perfect patio spa. The 461 features the rejuvenation of full body immersion and a variety of seating. The layout includes barrier-free seating, deeper Zone Therapy™ seating and a lounge to accommodate any size.



MODEL 461

Dimensions.....	78" X 78"
Depth.....	35"
Seating Capacity	4
Average Water Capacity	300
Weight (empty/full)	595/2995
Lounges	Yes/Single
Drink Holders	2
Molded Grab Bars.....	1
Barrier Free Seating	Yes
5" Underwater Light	Yes

STANDARD UTILITY FEATURES

Thermo-Lock™ V Insulation	Yes
Programmable Filter Cycles	Yes
Steel Sub-Structure.....	Yes
DuraMAAX™ Cabinetry.....	Yes

DELUXE THERAPY PACKAGE

Pump1	2.0Hp/3.6bHp, 230V, 2Sp
Pump2.....	2.0Hp/3.6bHp, 230V, 2Sp
Electrical Requirements (4-Wire) ..	240/40A/50A
Comfort Collar	1 Deluxe
Head Cushions.....	2
Digital Color Optic Lighting (interior only).....	Yes
Jet Total	28

PREMIUM PACKAGE (INCLUDES DELUXE FEATURES)

Blower 1.5hp one spd.	Yes
Air Jets.....	10
Aux. 2-Button Controller	Yes

OPTIONAL FEATURES FOR DELUXE/PREMIUM

CleanZone™ System	Yes
Clean Zone II™ System with UV Light	Yes
Remote Control	Yes
AM/FM/CD Stereo/Satellite Ready/MP3	No
Stainless Steel Accent Package	Yes
Pedestal Lights.....	Yes

*Premium model shown



470

The MAAX Collection 470 has a unique interior design that allows comfortable seating for seven while permitting full body immersion in the performance seat. This is the ideal model for those who enjoy outdoor entertaining or quiet conversation among friends. There are two different packages to enhance your experience: deluxe or premium.



MODEL 470

Dimensions	88" X 88"
Depth	35"
Seating Capacity	7
Average Water Capacity	395
Weight (empty/full)	725/3885
Bucket Seating	Yes
Drink Holders	6
5" Underwater Light	Yes

STANDARD UTILITY FEATURES

Thermo-Lock™ V Insulation	Yes
Programmable Filter Cycles	Yes
Steel Sub-Structure	Yes
DuraMAAX™ Cabinetry	Yes

DELUXE THERAPY PACKAGE

Pump1	2.5Hp/4.8bHp, 230V, 2Sp
Pump2	2.5Hp/4.8bHp, 230V, 2Sp
Electrical Requirements (4-Wire)240/40A/50A
Comfort Collar	2 Deluxe
Shiatsu Seat	Yes
Head Cushions	2
Illuminated Waterfall Feature	Yes
Digital Color Optic Lighting (interior only)	Yes
Jet Total	47

PREMIUM PACKAGE (INCLUDES DELUXE FEATURES)

Blower 1.5hp one spd	Yes
Air Jets	10
Aux. 2-Button Controller	Yes
After Hours Light Package (top rail)	Yes

OPTIONAL FEATURES FOR DELUXE/PREMIUM

CleanZone™ System	Yes
Clean Zone II™ System with UV Light	Yes
After Hours Light Package (DLX)	Yes
Remote Control	Yes
AM/FM/CD Stereo/Satellite Ready/MP3	Yes
Stainless Steel Accent Package	Yes
Pedestal Lights	Yes

*Premium model shown

471

The MAAX Collection 471 is our most popular hot tub and offers a single performance lounge with a foot relief zone and seating for up to six spa enthusiasts. There are two bucket seats with our specially designed comfort collar and Zone Therapy™ feature. This popular size is perfect for families or couples.



MODEL 471

Dimensions	88" X 88"
Depth	35"
Seating Capacity	6
Average Water Capacity	420
Weight (empty/full)	725/4085
Lounges.....	Yes/Single
Bucket Seating.....	Yes
Drink Holders	7
Molded Grab Bars	1
5" Underwater Light	Yes
Pedestal Lights.....	Yes

STANDARD UTILITY FEATURES

Thermo-Lock™ V Insulation	Yes
Programmable Filter Cycles	Yes
Steel Sub-Structure	Yes
DuraMAAX™ Cabinetry	Yes

DELUXE THERAPY PACKAGE

Pump1.....	2.5Hp/4.8bHp, 230V, 2Sp
Pump2.....	2.5Hp/4.8bHp, 230V, 2Sp
Electrical Requirements (4-Wire).....	240/40A/50A
Foot Relief Zone	Yes
Comfort Collar	2 Deluxe
Shiatsu Seat	Yes
Head Cushions	3
Illuminated Waterfall Feature.....	Yes
Digital Color Optic Lighting (interior only)	Yes
Jet Total.....	50

PREMIUM PACKAGE (INCLUDES DELUXE FEATURES)

Blower 1.5hp one spd	Yes
Air Jets	10
Aux. 2-Button Controller.....	Yes
After Hours Light Package (top rail)	Yes

OPTIONAL FEATURES FOR DELUXE/PREMIUM

CleanZone™ System	Yes
Clean Zone II™ System with UV Light	Yes
After Hours Light Package (DLX)	Yes
Remote Control	Yes
AM/FM/CD Stereo/Satellite Ready/MP3.....	Yes
Stainless Steel Accent Package	Yes
Pedestal Lights.....	Yes

*Premium model shown



472

The MAAX Collection 472 is the ideal spa for those couples looking to relax together. This model offers a performance lounge, standard lounge, one bucket seat with Zone Therapy™ and seating for five comfortably.



MODEL 472

Dimensions.....	88" X 88"
Depth.....	35"
Seating Capacity.....	5
Average Water Capacity.....	410
Weight (empty/full).....	725/4005
Lounges.....	Yes/Double
Barrier Free Seating.....	Yes
Drink Holders.....	3
Molded Grab Bars.....	2
5" Underwater Light.....	Yes

STANDARD UTILITY FEATURES

Thermo-Lock™ V Insulation.....	Yes
Programmable Filter Cycles.....	Yes
Steel Sub-Structure.....	Yes
DuraMAAX™ Cabinetry.....	Yes

DELUXE THERAPY PACKAGE

Pump1.....	2.5Hp/4.8bHp, 230V, 2Sp
Pump2.....	2.5Hp/4.8bHp, 230V, 2Sp
Electrical Requirements (4-Wire).....	.240/40A/50A
Foot Relief Zone.....	Yes
Calf Zone.....	Yes
Comfort Collar.....	1 Deluxe
Head Cushions.....	3
Illuminated Waterfall Feature.....	Yes
Digital Color Optic Lighting (interior only).....	Yes
Jet Total.....	48

PREMIUM PACKAGE (INCLUDES DELUXE FEATURES)

Blower 1.5hp one spd.....	Yes
Air Jets.....	10
Aux. 2-Button Controller.....	Yes
After Hours Light Package (top rail).....	Yes

OPTIONAL FEATURES FOR DELUXE/PREMIUM

CleanZone™ System.....	Yes
Clean Zone II™ System with UV Light.....	Yes
After Hours Light Package (DLX).....	Yes
Remote Control.....	Yes
AM/FM/CD Stereo/Satellite Ready/MP3.....	No
Stainless Steel Accent Package.....	Yes
Pedestal Lights.....	Yes

*Premium model shown

480

The MAAX Collection 480 is one of the largest spas in the MAAX Collection Series. It offers six barrier-free seats, two comfort collars, built in beverage cooler and a variety of jet patterns. This is the perfect spa for entertaining guests in your backyard retreat.



MODEL 480

Dimensions	91.5" x 91.5"
Depth	35"
Seating Capacity	7
Average Water Capacity	435
Weight (empty/full)	785/4265
Barrier Free Seating	Yes
Drink Holders	7
5" Underwater Light	Yes

STANDARD UTILITY FEATURES

Thermo-Lock™ V Insulation	Yes
Programmable Filter Cycles	Yes
Steel Sub-Structure	Yes
DuraMAAX™ Cabinetry	Yes

DELUXE THERAPY PACKAGE

Pump1	3.0Hp/5.9bHp, 230V, 2Sp
Pump2	3.0Hp/5.9bHp, 230V, 2Sp
Electrical Requirements (4-Wire)	240/40A/60A
Comfort Collar	2 Deluxe
Shiatsu Seat	Yes
Head Cushions	2
Illuminated Waterfall Feature	2
Digital Color Optic Lighting (interior only)	Yes
Jet Total	53

PREMIUM PACKAGE (INCLUDES DELUXE FEATURES)

Blower 1.5hp one spd	Yes
Air Jets	10
Aux. 2-Button Controller	Yes
After Hours Light Package (top rail)	Yes

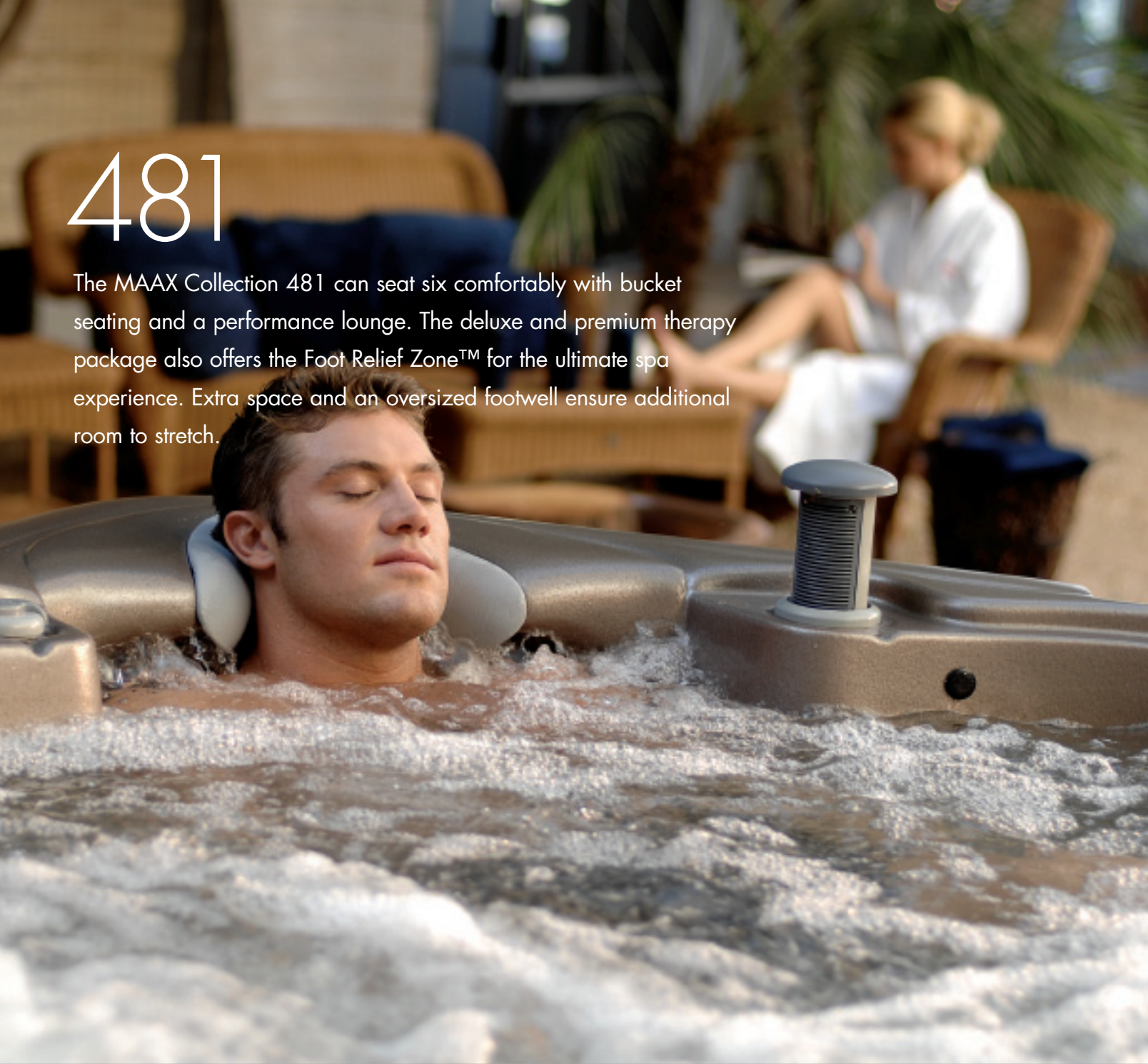
OPTIONAL FEATURES FOR DELUXE/PREMIUM

CleanZone™ System	Yes
Clean Zone II™ System with UV Light	Yes
After Hours Light Package (DLX)	Yes
Remote Control	Yes
AM/FM/CD Stereo/Satellite Ready/MP3	Yes
Stainless Steel Accent Package	Yes
Pedestal Lights	Yes

*Premium model shown

481

The MAAX Collection 481 can seat six comfortably with bucket seating and a performance lounge. The deluxe and premium therapy package also offers the Foot Relief Zone™ for the ultimate spa experience. Extra space and an oversized footwell ensure additional room to stretch.



MODEL 481

Dimensions	91.5" x 91.5"
Depth	35"
Seating Capacity	6
Average Water Capacity	455
Weight (empty/full)	785/4425
Lounges	Single
Bucket Seating	Yes
Drink Holders	5
Molded Grab Bars	1
5" Underwater Light	Yes

STANDARD UTILITY FEATURES

Thermo-Lock™ V Insulation	Yes
Programmable Filter Cycles	Yes
Steel Sub-Structure	Yes
DuraMAAX™ Cabinetry	Yes

DELUXE THERAPY PACKAGE

Pump1.....	3.0Hp/5.9bHp, 230V, 2Sp
Pump2.....	3.0Hp/5.9bHp, 230V, 2Sp
Electrical Requirements (4-Wire).....	.240/40A/60A
Foot Relief Zone	Yes
Comfort Collar	2 Deluxe
Shiatsu Seat	Yes
Head Cushions	3
Illuminated Waterfall Feature.....	Yes
Digital Color Optic Lighting (interior only)	Yes
Jet Total	53

PREMIUM PACKAGE (INCLUDES DELUXE FEATURES)

Blower 1.5hp one spd	Yes
Air Jets	10
Aux. 2-Button Controller.....	Yes
After Hours Light Package (top rail)	Yes

OPTIONAL FEATURES FOR DELUXE/PREMIUM

CleanZone™ System	Yes
Clean Zone II™ System with UV Light	Yes
After Hours Light Package (DLX)	Yes
Remote Control	Yes
AM/FM/CD Stereo/Satellite Ready/MP3.....	Yes
Stainless Steel Accent Package	Yes
Pedestal Lights.....	Yes

*Premium model shown



482

The MAAX Collection 482 has comfortable seating for five with a performance lounge and a standard lounge, allowing you and your loved one to unwind together. The unique design offers a conversation area. The deluxe and premium therapy package provides the Foot Relief Zone™ and Zone Therapy™ targeting both the upper and lower parts of the feet and back.



MODEL 482

Dimensions	91.5" x 91.5"
Depth	35"
Seating Capacity	5
Average Water Capacity	445
Weight (empty/full)	785/4345
Lounges	Yes/Double
Barrier Free Seating	Yes
Drink Holders	5
Molded Grab Bars	2
5" Underwater Light	Yes

STANDARD UTILITY FEATURES

Thermo-Lock™ V Insulation	Yes
Programmable Filter Cycles	Yes
Steel Sub-Structure	Yes
DuraMAAX™ Cabinetry	Yes

DELUXE THERAPY PACKAGE

Pump1	3.0Hp/5.9bHp, 230V, 2Sp
Pump2	3.0Hp/5.9bHp, 230V, 2Sp
Electrical Requirements (4-Wire)240/40A/60A
Foot Relief Zone	Yes
Calf Zone	Yes
Comfort Collar	2 Deluxe
Head Cushions	2
Illuminated Waterfall Feature	Yes
Digital Color Optic Lighting (interior only)	Yes
Jet Total	53

PREMIUM PACKAGE

(INCLUDES DELUXE FEATURES)	
Blower 1.5hp one spd	Yes
Air Jets	10
Aux. 2-Button Controller	Yes
After Hours Light Package (top rail)	Yes

OPTIONAL FEATURES FOR DELUXE/PREMIUM	
CleanZone™ System	Yes
Clean Zone II™ System with UV Light	Yes
After Hours Light Package (DLX)	Yes
Remote Control	Yes
AM/FM/CD Stereo/Satellite Ready/MP3	No
Stainless Steel Accent Package	Yes
Pedestal Lights	Yes

*Premium model shown

780

The 780 is a blend of spacious design and specialized hydrotherapy. There is seating for 7 adults in a variety of jetting arrays to meet the different needs of the bather. The 780 incorporates two zone therapy seats, dual shiatsu seats and a side by side conversation area for couples to curl up in.



MODEL 780

Dimensions	91.5" x 91.5"
Depth	35"
Seating Capacity	7
Average Water Capacity	365
Weight (empty/full)	785/3705
Lounges	No
Barrier Free Seating.....	Yes
Drink Holders.....	6
Molded Grab Bars.....	0
5" Underwater Light.....	Yes

STANDARD UTILITY FEATURES

Thermo-Lock™ V Insulation.....	Yes
Programmable Filter Cycles.....	Yes
Steel Sub-Structure	Yes
DuraMAAX™ Cabinetry.....	Yes
Pump 1	3.0Hp/5.9bHp, 240V, 2Sp
Pump 2	3.0Hp/5.9bHp, 240V, 2Sp
Pump 3	3.0Hp/5.9bHp, 240V, 2Sp
Electrical Requirements (4-Wire) .240/40A/60A	
Foot Relief Zone	No
Comfort Collar	1
Head Cushions.....	5
Illuminated Waterfall Feature.....	Yes/2

Digital Color Optic Lighting (interior only)	Yes
Jet Total	70
Blower 1.5hp one spd	Yes
Air Jets	10
Aux. Controller	No
After Hours Light Package (top rail)	Yes
CleanZone™ System.....	Yes
Clean Zone II™ System with UV Light	Yes
AM/FM/CD Stereo/Satellite Ready/MP3	Yes
Stainless Steel Accent Package	Yes
Pedestal Lights.....	Yes
Spa Monitor.....	Yes

781

The 781 has seating for 5 adults with a variety of hydrotherapy systems. The "performance" lounge has a foot relief zone and a dynamic jet sequencer for a head to toe hydrotherapy experience. The 781 includes a zone therapy seat, a shiatsu seat and a conversation area to deliver a complete hydrotherapy experience.



MODEL 781

Dimensions	91.5" x 91.5"
Depth	35"
Seating Capacity	5
Average Water Capacity	400
Weight (empty/full)	850/4050
Lounges	Yes
Barrier Free Seating	Yes
Drink Holders	5
Molded Grab Bars	No
5" Underwater Light	Yes

STANDARD UTILITY FEATURES

Thermo-Lock™ V Insulation	Yes
Programmable Filter Cycles	Yes
Steel Sub-Structure	Yes
DuraMAAX™ Cabinetry	Yes
Pump1	2.5Hp/4.8bHp, 230V, 2Sp
Pump2	3.0Hp/5.9bHp, 230V, 2Sp
Pump2	2.5Hp/4.8bHp, 230V, 1Sp
Electrical Requirements (4-Wire)	.240/40A/60A
Foot Relief Zone	Yes
Comfort Collar	No
Head Cushions	5
Illuminated Waterfall Feature	Yes
Digital Color Optic Lighting (interior)	Yes

Jet Total	61
Blower 1.5hp one spd	Yes
Air Jets	10
Aux. Button Controller	No
After Hours Light Package (top rail)	Yes
CleanZone™ System	Yes
Clean Zone II™ System with UV Light	Yes
Sequencer	Yes
Remote Control	Yes
AM/FM/CD Stereo/Satellite Ready/MP3	Yes
Stainless Steel Accent Package	Yes
Pedestal Lights	Yes
Spa Monitor	Yes



705

The 705 features a "performance" lounge and a standard lounge with calf and thigh jets. The corner seat is designed with special "reverse" molded technology to provide a full body spa experience with jets on the front and the back.



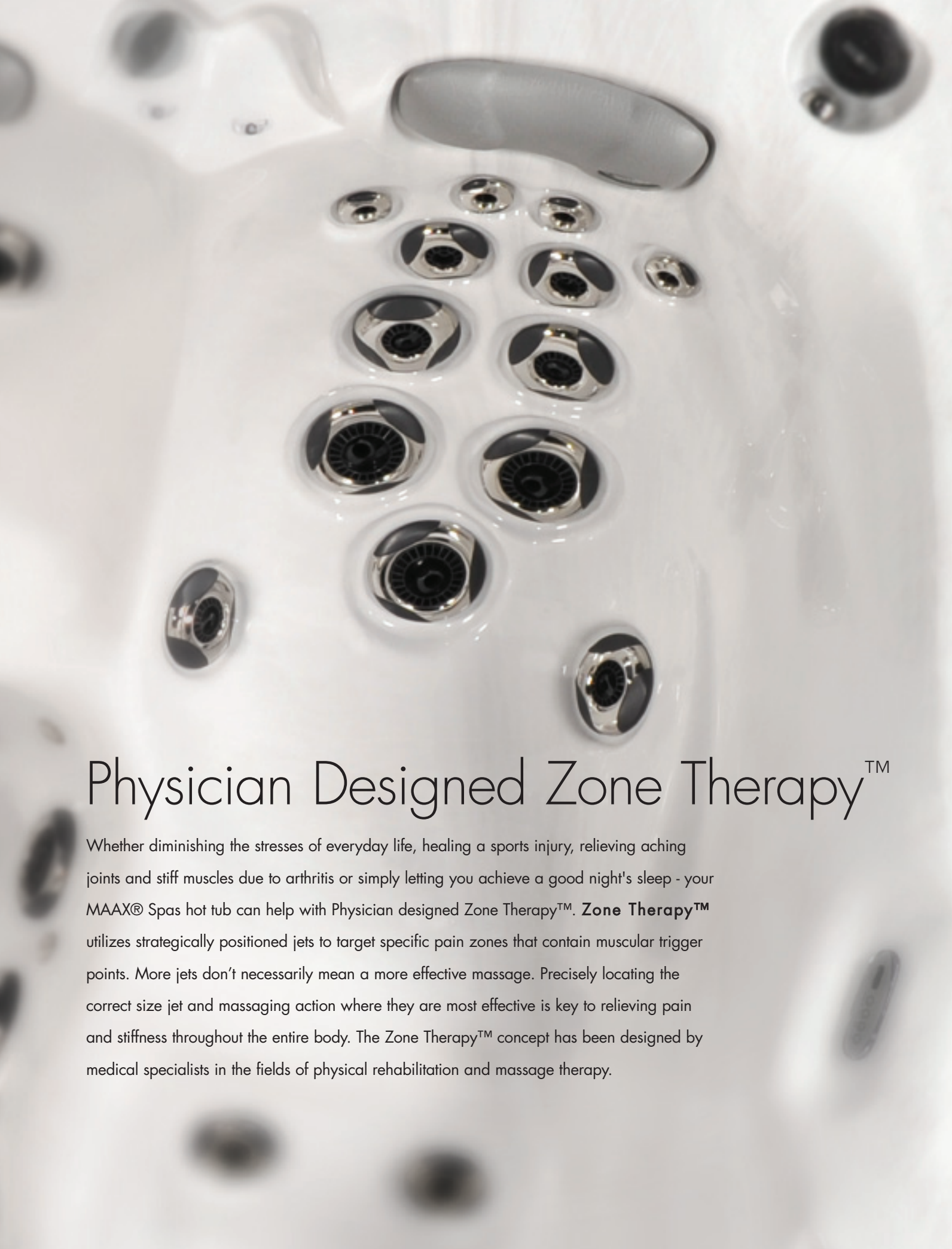
MODEL 705

Dimensions	90" x 92"
Depth	35"
Seating Capacity	5
Average Water Capacity	400
Weight (empty/full)850/4050
Lounges	Yes/Double
Bucket Seating	Yes
Drink Holders	1
Molded Grab Bars	2
5" Underwater Light	Yes

STANDARD UTILITY FEATURES

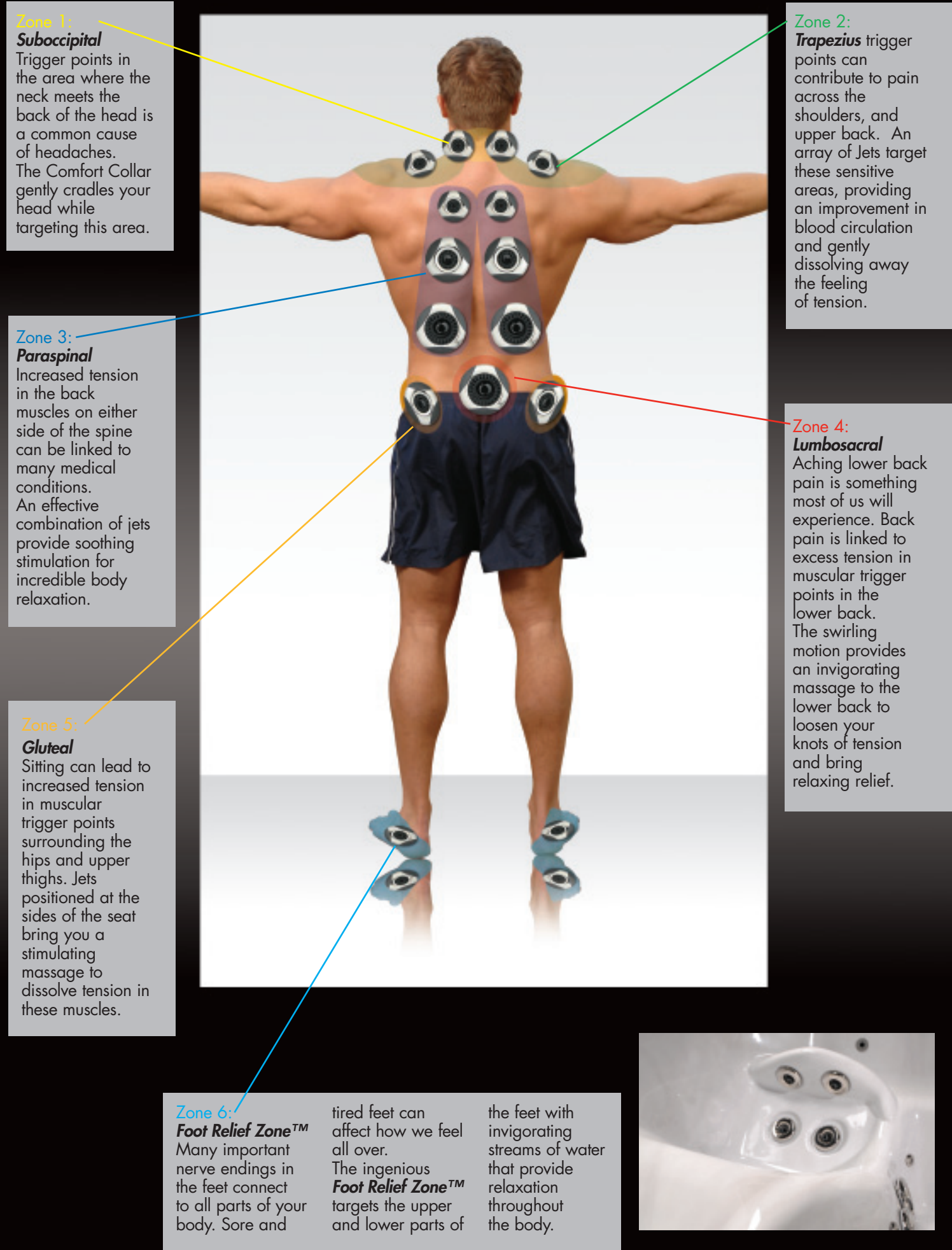
Thermo-Lock™ V Insulation	Yes
Programmable Filter Cycles	Yes
Steel Sub-Structure	Yes
DuraMAAX™ Cabinetry	Yes
Pump1	2.5Hp/4.8bHp, 230V, 2Sp
Pump2	2.5Hp/4.8bHp, 230V, 2Sp
Pump3	2.5Hp/4.8bHp, 230V, 2Sp
Electrical Requirements (4-Wire)240/40A/60A
Foot Relief Zone	Yes
Comfort Collar	Yes
Head Cushions	3

Illuminated Waterfall Feature	No
Digital Color Optic Lighting (interior only)	Yes
Jet Total	53
Blower 1.5hp one spd	No
Aux. Controller	Yes
After Hours Light Package (top rail)	No
CleanZone™ System	Yes
AM/FM/CD Stereo/Satellite Ready/MP3	No
Stainless Steel Accent Package	Yes
Pedestal Lights	Yes
Spa Monitor	No



Physician Designed Zone Therapy™

Whether diminishing the stresses of everyday life, healing a sports injury, relieving aching joints and stiff muscles due to arthritis or simply letting you achieve a good night's sleep - your MAAX® Spas hot tub can help with Physician designed Zone Therapy™. **Zone Therapy™** utilizes strategically positioned jets to target specific pain zones that contain muscular trigger points. More jets don't necessarily mean a more effective massage. Precisely locating the correct size jet and massaging action where they are most effective is key to relieving pain and stiffness throughout the entire body. The Zone Therapy™ concept has been designed by medical specialists in the fields of physical rehabilitation and massage therapy.





Comfort Collar



This unique cushion wraps around your neck, cradling your head while adjustable cyclone jets massage neck and shoulder muscles. The Comfort Collar allows a relaxing massage above the water line.



TheraMAAX™

The proprietary TheraMAAX™ Jets utilize a scientifically designed grill surrounding the nozzle of the jet. This grill reduces drag on moving parts and cohesion of the jet stream. The TheraMAAX™ design maximizes performance and improves the massaging action. The three spoke stainless steel escusion provides a textured landing for your fingers. This natural shape and position of the landing areas make it easy to adjust the power of the jet.

Calf Zone



The Calf Zone massages the lower leg with 12 deep tissue massage jets, increasing circulation and healing properties. This feature is great if you're on your feet a lot.



TheraMAAX™ Directional Jet:
Designed to provide a direct massage to larger muscle groups.



TheraMAAX™ Swirl Jet:
Swirling action provides an intermittent massage covering a larger area.



Foot Relief Zone



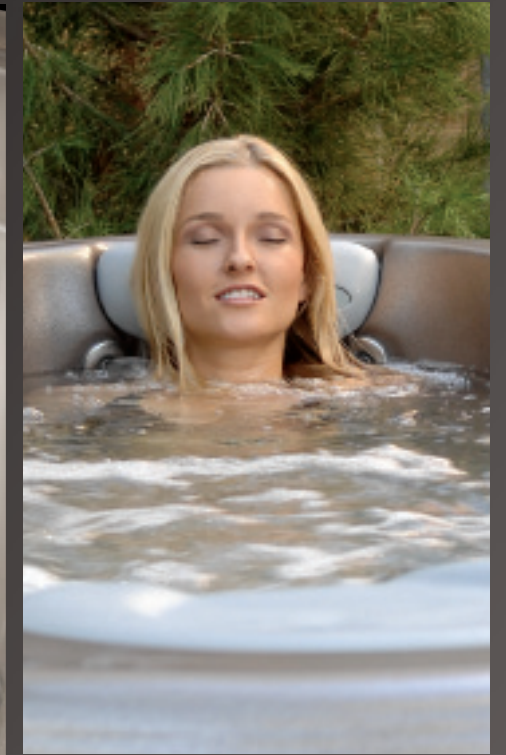
Sore and tired feet can affect how we feel all over. The ingenious **Foot Relief Zone™** targets the upper and lower parts of the feet with streams of water that provide a "spa for your feet".





X-Series Collar

The convenient X-series increases the seat size in the deep corner seat for physical freedom of movement and enhanced comfort for those who need it. Four strategically placed cluster jets provide a deep tissue neck massage to targeted pressure points, relieving tension.



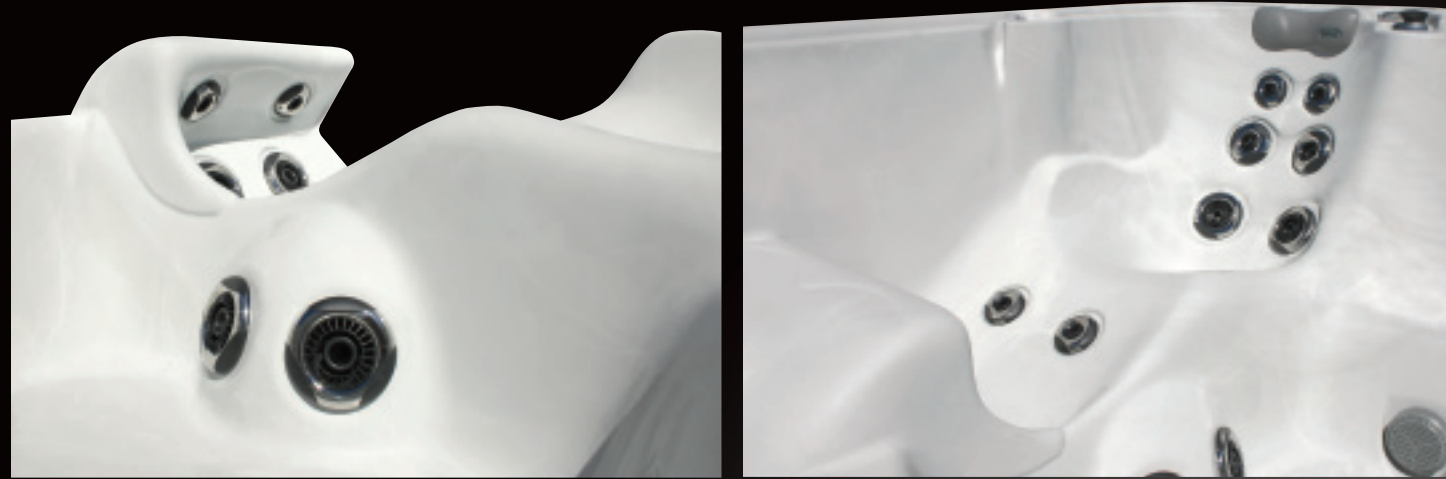
Rejuvenate

Comfort Collar™

A neck therapy jet massage system is one of the most relaxing features in a spa. That's why MAAX Spas® has engineered the reverse molded Comfort Collar™. This unique cushion wraps around your neck, gently cradling your head while adjustable cyclone jets massage neck and shoulder muscles. The Comfort Collar™ also allows a relaxing massage above the water line, it's like having your neck massaged by a loved one.

This hallmark feature is one of the reasons many have already chosen MAAX Spas® hot tubs.





Comfort

Performance Seating™

Comfortable seating is a top priority in the design of every MAAX Spas® hot tub. With a wide variety of seating styles available, you'll find the perfect model to fit your shape and size. Depending on the model you prefer, seating ranges from an open style to those designed to keep you in position so the jets can work their miracles. You'll find each engineered to scientifically balance ergonomic support, water pressure, jet position and body buoyancy. Deeply contoured seating provides ultimate comfort, while armrests and footwells seem to mold to your body.

Performance Seating™ has earned us the reputation of having the most comfortable spas in the industry. Each seat is designed to provide full body immersion and proper posture, in harmony with their respective jetting pattern, for superior comfort and performance. Built-in comfort collars cradle your

head while side bolsters hold your body in an ergonomic position. Built-in lumbar support also contours to the curvature of the spine which provides correct posture, reducing stress on your lower back.



Distinctive Shape

The distinctive shape of the MAAX Spas® hot tub emerged from an effort to increase room in the footwell area while lowering the overall height of the spa to respect sight lines in the site design. It has become one of the most appealing exterior concepts of MAAX Spas® hot tubs. This concept allows MAAX Spas® hot tubs to be added to any backyard design without visual interference.



Stereo Combination

With a MAA
X Spas® Sony®
stereo/CD
combination,
sound resonates
through the water
from a subwoofer
integrated into the
spas interior
substructure, allow-
ing you to
not only hear, but

also to feel, your
desired music.
Your favorite play
lists and satellite
radio are just a
touch away with
the Sony satellite
ready stereo and
MP3 connection.
Technology



Stereo Remote Control

This hand held
remote allows you
to control your
spas stereo system
with ease, from
anywhere inside
the spa.



Euphoria



Fully Integrated Speakers

Two fully integrated speakers provide
crisp clear fidelity for your listening
enjoyment.

Sub-Woofer

With MAA X Spas Sony stereo/CD
combination, sound resonates through
the water from a subwoofer integrated
into the spas substructure, allowing you
to not only hear, but also to feel,
your music.



Designed to Last

Technically and functionally superior, your MAAX Spas® hot tub has been designed in association with medical and engineering professionals to deliver years of trouble-free enjoyment. Every aspect of the spa, from its structure to the mechanical operation, is recognized as industry leading. Additionally over 300 quality control check points are personally inspected by in-house engineers to ensure every step of the manufacturing process is up to the standards our reputation demands.

56 Frame Pump

MAAX Spas® hot tubs utilize industrial duty dual speed **56 frame pumps** in all of their 240 volt models. The 56 frame motor is larger, more powerful and delivers higher water flow for better jet performance than the 48 frame motors found in most spas. They also run cooler for longer life and have lower amp draw for lower operating costs.



Solid State Controls

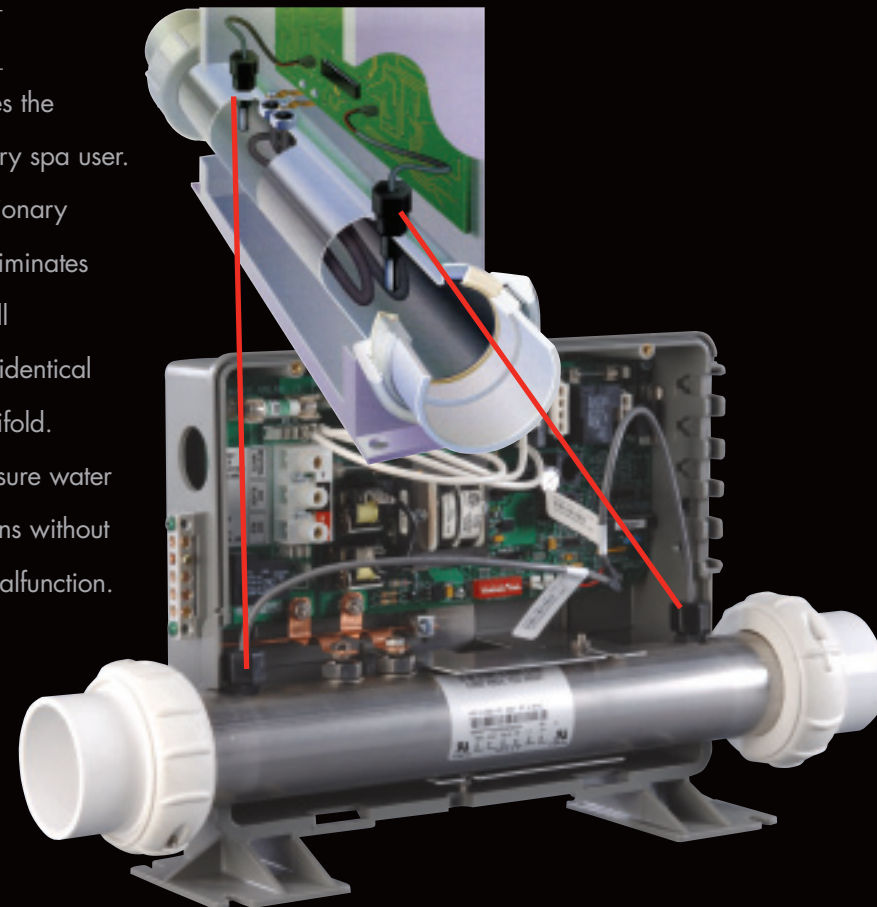
The MAAX® Spas easy to read control panel allows you, with the touch of a button to change the temperature, adjust lighting or control your massage. The reliability of these solid state controls center around gold piezo switches and marine grade construction.



Technology

Powerworks™ with M7 Technology

An advanced, state of the art spa controller provides the ultimate in ease of use, safety and reliability for every spa user. The **Powerworks™ with M7 technology** is a revolutionary new hardware/software platform that completely eliminates mechanical sensor switches and remote through-wall temperature sensors. The M7 platform features two identical solid state sensors that mount inside the heater manifold. These Smart Sensors accurately and reliably measure water temperature while monitoring critical water conditions without the possibility of failure due to mechanical switch malfunction.



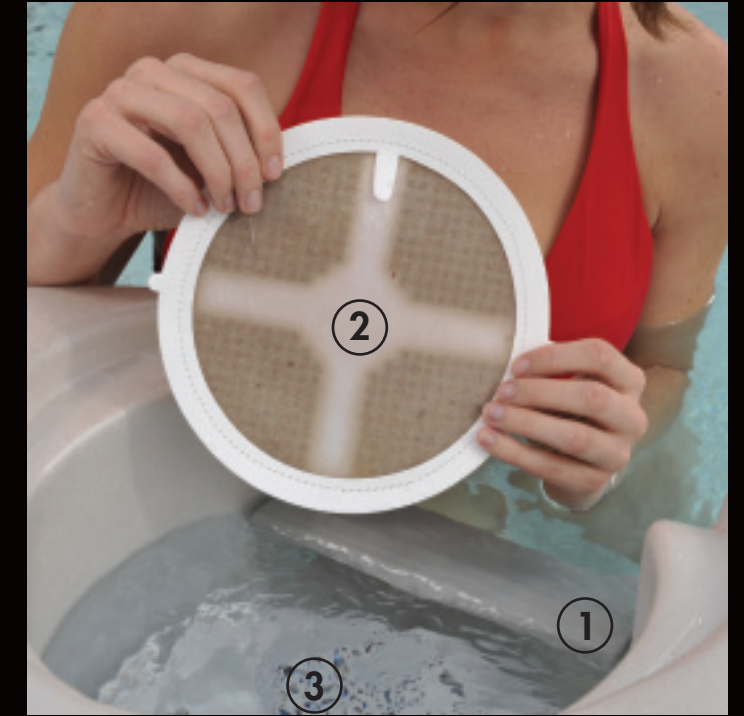
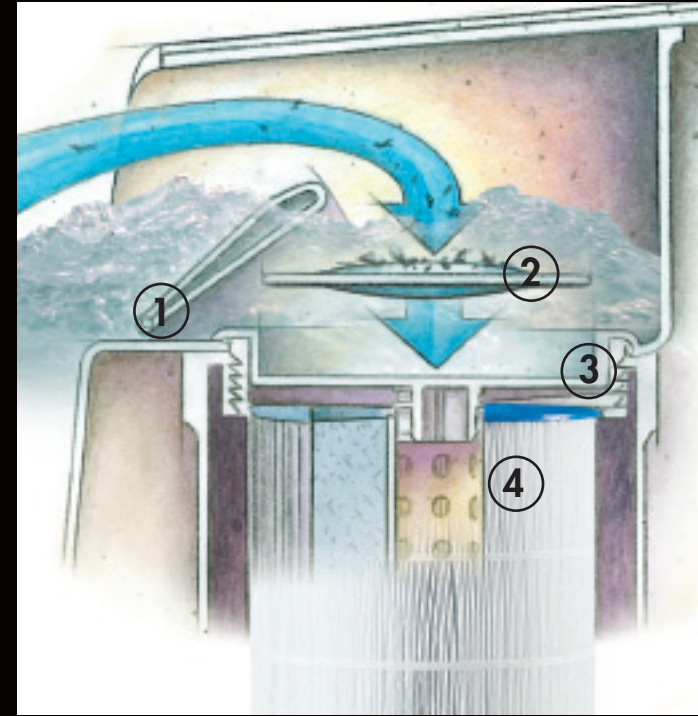
Interior Spa Monitor Accessory

Adjust your spa's heat and power the jets before you even step outside with our innovative wireless spa monitor. This advanced spa monitor displays water temperature while checking the health of your spa. An audible alert will sound for power outages or equipment fault.

Easy Touch™ Floating Remote Control

Optional **Easy Touch™ Remote Controls** on selected models allow jet control, turbo boost and lighting from anywhere in the spa. The wireless infrared design comes in a waterproof case and even floats for ultra convenience. Easy and fun to use, it's another unique addition to the ultimate spa experience.





6 Steps To Clean Water

1. Weir Door
2. First Filter
3. Basket
4. Spa Filter
5. CleanZone™
6. CleanZone II™

First Filter

Our unique **First Filter™** removes silt and fine particulates that would pass undetected through an ordinary filter. The skimmer basket traps larger materials such as leaves and debris - and the basket is then easily removed for quick cleaning.

Purity

Filtration

Perfect moments deserve perfect, crystal clear water. The water maintenance of your spa is made easy by the features of the MAAX Spas® complete 6 step cleaning system. Water is first drawn into the system from both the upper skimmer and lower footwell areas. The **High-Velocity Skimmer** draws water into the filter system to capture surface debris and contaminants. Our 100% filtration means every drop of water is filtered before reaching the **Powerworks™ 56 frame pump** as our high volume filter cycle cleans your spa water 4 to 6 times per hour. Glistening clean water, in a moments notice.

CleanZone™

Clean water is the cornerstone of spa enjoyment. MAAX Spas® **CleanZone™** water purification system will automatically maintain healthy, crystal clear water while greatly reducing chemical maintenance. CleanZone™ is an ultraviolet plasma cell ozone system that disinfects and cleans your spa water. And best of all, CleanZone™ does not require any cleaning or maintenance whatsoever. Worry-free enjoyment, throughout the life of your spa.



CleanZone II™

The Clean Zone II™ system combines the power of UVC light and Ozone, the same technology utilized in many communities around the world to purify drinking water. Clean Zone II™ kills 99.9%* of microorganisms, bacteria, viruses and parasites while oxidizing debris left behind. This system is the perfect blend of hygiene, purity and technology.



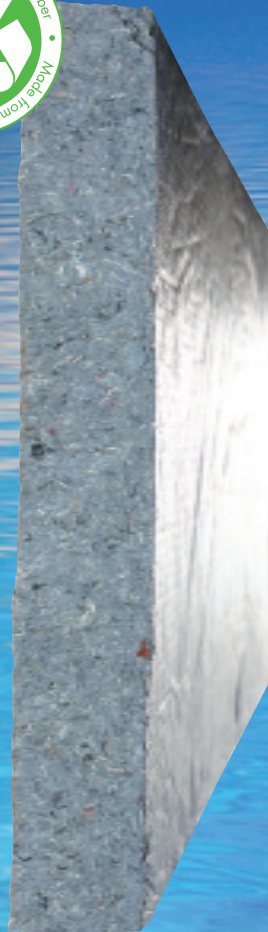
Eco-friendly



BlueMAAX™

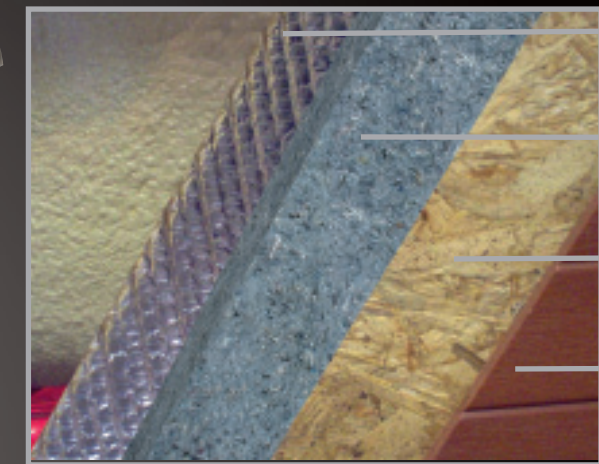
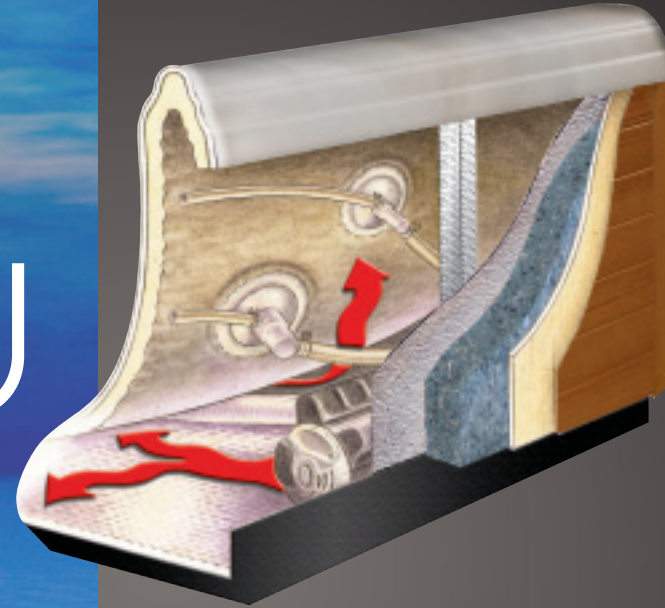
Exclusive to MAAX Spas, the ThermoLock V insulation system now features the eco-friendly BlueMAAX insulation. Made from recycled natural fiber, it is approved by the U.S. Green Building Council. The insulation contains no chemical irritants, is treated with a borate-based solution to prevent mold/mildew growth, pest infestation, and acts as a fire retardant.

BlueMAAX® replaces urethane foam commonly used in foam filled hot tubs. The foam filling process in conventional spas can produce as much as 50 lbs. of volatile organic components (VOCs) which are harmful to the environment. The new energy system also allows for easy service access, and can be taken out and put back together to factory specifications right in your home.



MAAX Spas Features Thermo-Lock V

Thermo-Lock V is the ultimate in sound and heat energy management for your hot tub. The unique thermal barrier technology recycles radiant heat energy for faster, more efficient heating and energy cost reductions. Radiant heat reflective insulation is applied to the sealed ABS base, which prohibits heat loss through the floor. All four sides, plus the floor are lined with reflective material, combined with BlueMAAX® to create an infrared thermal barrier. Radiant heat energy from the pumps and equipment reflects back to the spa and is absorbed into the plumbing. This helps raise and maintain water temperature, improving heat efficiency. Energy created by the spa stays in the spa.



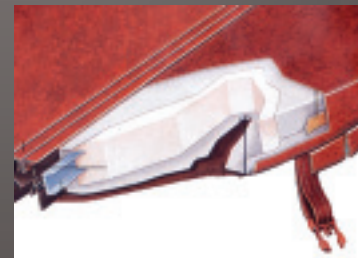
Radiant Heat Reflective Insulation

BlueMAAX™

Recycled Wood Panel Substrate

DuraMAAX®

Insulating Covers



MAAX Spas® premium grade **insulating covers** are unique and the tailored fit design keeps water from evaporating while maintaining the perfect spa temperature. The cover also acts as an important safety barrier to the spa.

Quiet

The same insulation that makes a MAAX Spas hot tub energy efficient also aids in its quiet operation. Sound energy is trapped and deadened inside the spa by the thermal barriers. Quiet operation is essential to ensure a peaceful and relaxing experience throughout the entire backyard environment.



Steel Sub-Structure

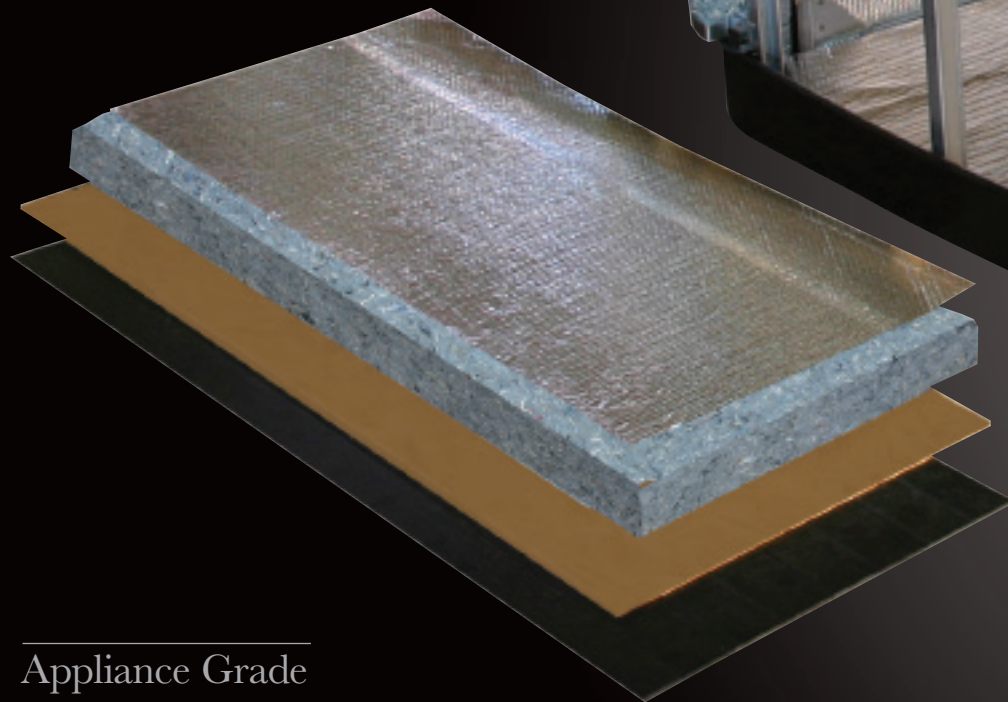
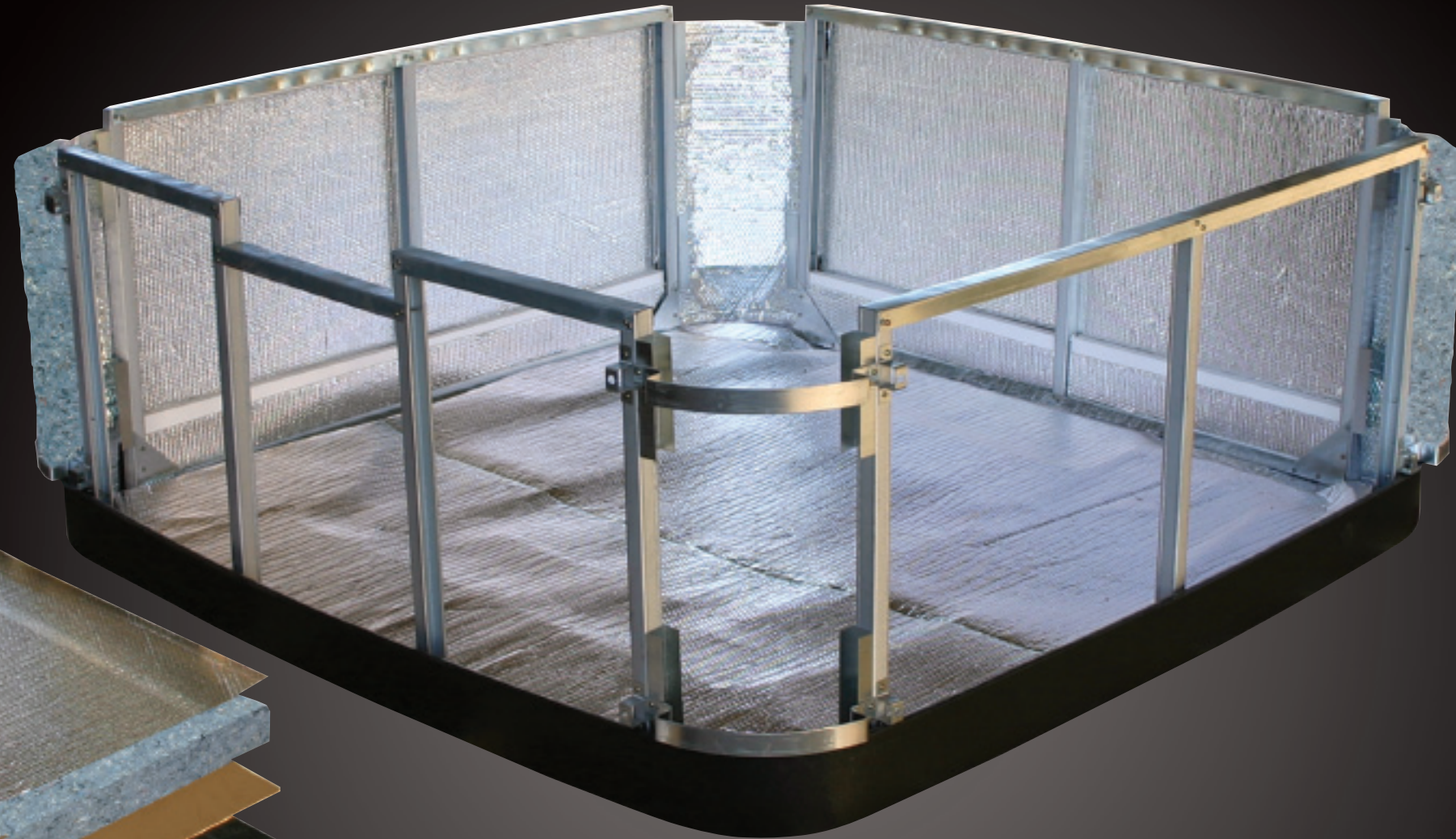
The **Steel Sub-Structure** used in MAAX Spas® units has the highest strength to weight ratio of any building material available. The light-gauge steel frame provides greater structural integrity than wood, as well as superior corrosion protection for a much longer life. Unlike wood, steel is dimensionally stable. It will not expand or contract with moisture, which over time can damage the spa's exterior. Sturdy and built to last, the inorganic properties will never rot, warp, split or crack and eliminate worries of animal infestation or termite damage. Stronger, more durable, and ideal for the environment - it's the obvious choice for a lifetime of worry-free fun.

40% lighter, yet 250% stronger than traditional wood frames.

Weatherproof

Corrosion-free

Maintenance-free



Appliance Grade

The steel structure and Thermo-Lock design in MAAX Spas allows for complete service of the entire structure and all mechanical parts. Essentially the spa can be serviced and brought back to factory specifications right in your backyard. At MAAX Spas we call this feature **appliance grade**. It is important to consider the servicability of your hot tub, just as you would in any other home appliance or mechanical device.

ABS Sealed Base

The **ABS Sealed Base** is an integral part of the support structure in a MAAX Spas® hot tub. Its one-piece construction provides a rugged foundation that seals the bottom of the spa, locking in heat and sealing out moisture.



Service

Should your MAAX Spas hot tub ever need maintenance, you can feel at ease. Your new MAAX Spas hot tub can be serviced and put completely back together to factory specifications. This is not possible with conventional foam-filled hot tubs as these older designs are extremely hard to service and are typically damaged in the process. It is very costly to bring these older designs back to factory installation specifications.

Servicing a Foamed Filled Spa

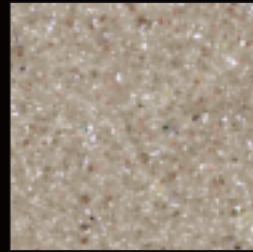


Continuous Cast Acrylic

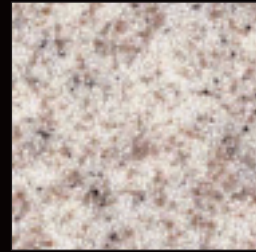
Every MAAX Spas® hot tub has an attractive interior finish made from **continuous cast acrylic**. The hard, non-porous surface resists stains, fading, scratches and chemical abuse. With the look of granite, pearl or metascence, the extremely rugged and durable finish offers beauty and peace of mind.

Acrylic Colors

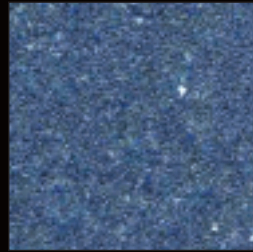
Desert



Sahara



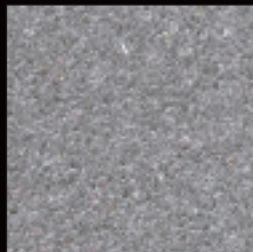
Denim



Cinnabar



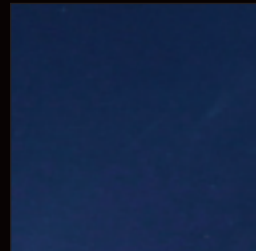
Quartz



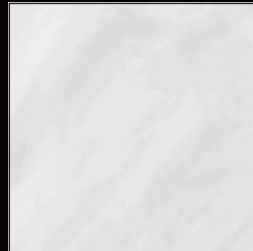
Gypsum



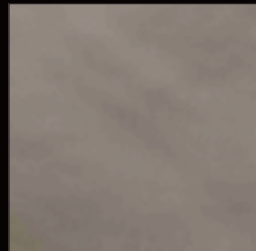
Cobalt



Silver Marble



Oyster Opal



Midnight Opal



DuraMaax™ Siding

DuraMaax™ is a state of the art wood-alternative material that has the look and feel of natural wood, without the maintenance. The material is impact resistant, impervious to weather or insect damage and will never splinter, crack or rot. The attractive exterior locks in heat and seals out cold air - providing a beautiful look and feel.



Brown



Gray



Mocha



Aesthetics



Illuminated Waterfall

Enjoy the soothing sound of the eye-catching **illuminated waterfall feature**.

Lighting

Built-in **internal and external lighting** illuminates the spa for both safety and romance. A selection of unique color options can further enhance an already perfect evening, taking backyard fun to soaring new heights.

Ergonomic Massage Controller

The Ergonomic Massage Controller is illuminated to work in harmony with the other lighting options. It provides an ergonomic grip for easy adjustment of the jet pressure.



Confidence

Warranty

To ensure your confidence, MAAX Spas® hot tubs offer an industry-leading warranty against structural, surface and cosmetic defects, as well as water loss and failure in mechanical or electrical equipment. Further, our Steel Sub-Structure is covered by a lifetime structural guarantee.



40 Years of expertise in luxury hot water products



1969 MODERN FIBERGLASS

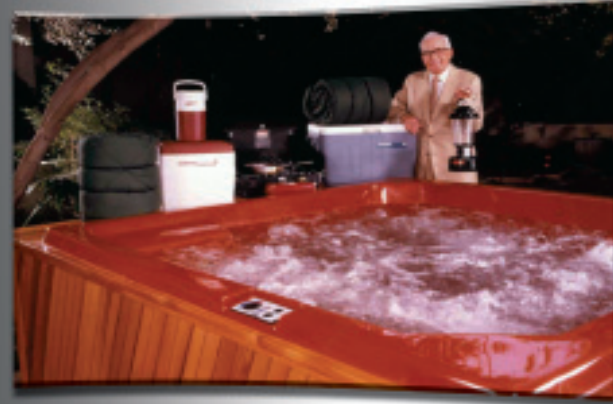
1973 BATH PRODUCTION BEGINS

- Production of progressive fiberglass bathtubs and showers begins



1987 MAAX IS BORN

- Listing on Montreal Stock Exchange
- The name MAAX® is coined.



1997 MAAX ENTERS SPA CATEGORY

- Acquisition of 15 year old Coleman Spas Inc.
- Acquisition of 23 year old California Cooperage.



2007 MAAX COMPANY STATISTICS

- MAAX, Inc. ranks among the five largest firms in its industry in North America
- 24 plants and independent distribution centers
- 2,900 employees



2009 MAAX ACQUIRED BY BROOKFIELD

BECOMES PART OF THE LARGEST COMPANY IN THE WORLD INVOLVED IN THE MANUFACTURING OF SPAS

MAAX® originated in 1969 with the founding of Modern Fiberglass and Metal and grew into a leading manufacturer of modern whirlpool systems in the bathtub industry. MAAX® soon became synonymous for long lasting quality and innovation, expanding into the spa sector by acquiring companies such as Coleman Spas, Savannah, and Manhattan, makers of the Infinity and Lifestyle line. Today MAAX® Spas has a reputation of superior design and innovation. From the steel frame to the Thermo-lock® insulation, your new MAAX® Spas hot tub will provide you the ultimate luxury home spa experience.

MAAX® **SPAS**